



# BUILD THE DREAM

**“THE END IS ONLY  
THE BEGINNING”**

**Neh 8**

**Where do we go from here?**

**Building Today for a Better Tomorrow**



# BUILD THE DREAM

**“Take Notes”**

**“After 72 hours you  
forget 95% of what  
you hear!”**



**Building Today for a Better Tomorrow**

# BUILD THE DREAM

- **NEW STRUCTURES  
DO NOT GUARANTEE  
REVIVAL.**

**The End Is Only The Beginning**

# BUILD THE DREAM

- Their confidence should be in the **GOD** who enabled them to build the wall (Neh 6:16).

**The End Is Only The Beginning**



# Welcome from the Kirkland church family!

“Born to belong to each other”



September 8, 2013



**Tonight at 5:00 P.M.**

THE **EXALTED** PLACE OF  
**SINGING** ....

IN THE CHURCH



# The Spiritual Significance of Christ's Death

Sunday, April 13<sup>th</sup> 10:30AM



*A special lesson to prepare our  
minds for the Lord's Supper*

***The profound significance  
of the events surrounding  
Christ's death***


*Please join us and bring a friend!*

[www.kirklandchurchofchrist.com](http://www.kirklandchurchofchrist.com)

the Kirkland Church of Christ ~ 10421 NE 140th Street ~ Kirkland, WA 98034

*"Seeking to know Him, seeking to make Him known"*





**Sunday morning**  
**April 20, 2014**

**IT'S FRIDAY...BUT  
SUNDAY'S COMING!**

**SPECIAL INVITATION EVENT**

# BUILD THE DREAM

**“THE END IS ONLY  
THE BEGINNING”**

**Neh 8**

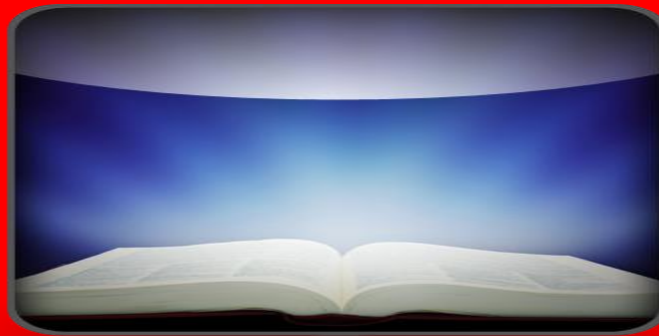
**Where do we go from here?**

**Building Today for a Better Tomorrow**



# BUILD THE DREAM

**TRUE REVIVAL BEGINS WITH A  
RENEWED HUNGER FOR GOD'S  
WORD!**



**The End Is Only The Beginning**

# BUILD THE DREAM

The people were starving due to a famine of God's word (Amos 8:11).

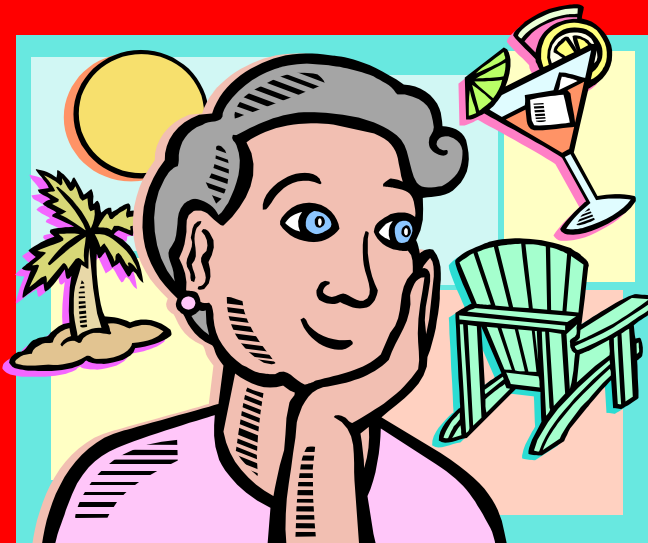


**The End Is Only The Beginning**



# BUILD THE DREAM

Today's famine is not compulsory  
but voluntary.



**The End Is Only The Beginning**

# BUILD THE DREAM



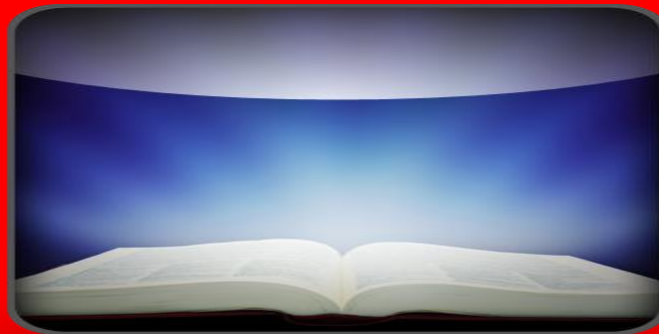
Healthy babies  
“long for the pure  
milk of the word  
that they may grow  
thereby”  
(I Pet 2:2).

**The End Is Only The Beginning**



# BUILD THE DREAM

There was a sincere **HONORING** of  
the **Word** (Neh 8:3-6).



**The End Is Only The Beginning**

# BUILD THE DREAM

There was a **sincere HONORING** of the **Word** (Neh 8:3-6).

- Lack of **Time Consciousness**.
- *“Stood from early morning until midday” (8:3).*

**6 HOURS**

**The End Is Only The Beginning**



# BUILD THE DREAM

There was a sincere **HONORING** of  
**the Word** (Neh 8:3-6).

- They were *spontaneous and expressive* (8:6).

**AMEN, AMEN!**

**The End Is Only The Beginning**

# BUILD THE DREAM

There was a proper **HANDLING** of the **Word** (Neh 8:7-8).

- Read from the text, translated it, and **EXPLAINED** the law (8:7).
- Purpose of preaching = help people **UNDERSTAND** the message (8:8).

The End Is Only The Beginning

# BUILD THE DREAM

There was a 3-fold response:

➤ **Brokenness!**

➤ “The people **wept**” (8:9).

➤ **Joy!**

➤ “The **joy** of the Lord is your strength(8:10).”

➤ **Security in their future!**

**The End Is Only The Beginning**



# BUILD THE DREAM

**DO YOU LET  
THE WORD  
SPEAK TO *YOU*?**



**The End Is Only The Beginning**

# BUILD THE DREAM

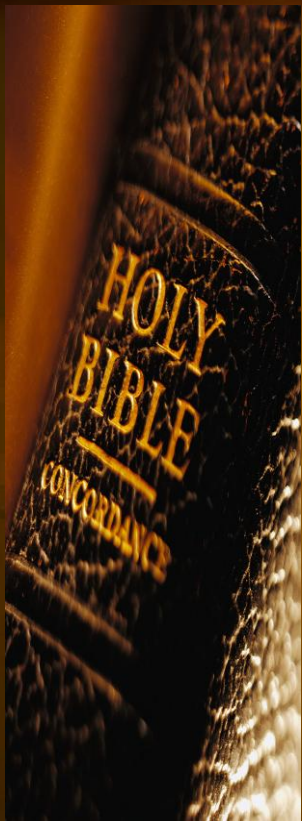
Three things:

➤ **COMPLETENESS!**

❖ Matt 4:4, Ecc 3:11

➤ **CONVICTION**

❖ Heb 4:12-13, Jas 1:23



**The End Is Only The Beginning**

# BUILD THE DREAM

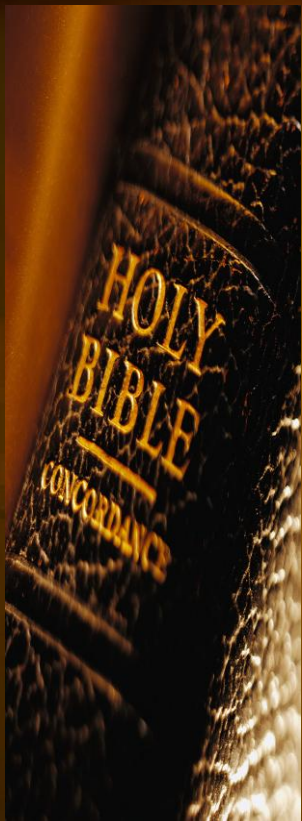
Three things:

➤ **COMPLETENESS!**

➤ **CONVICTION!**

➤ **CELEBRATION!**

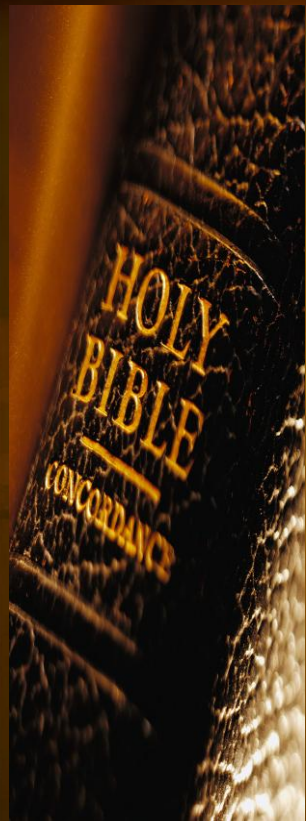
➤ **Neh 8:12**



**The End Is Only The Beginning**



# BUILD THE DREAM



**As we vision cast into the future . . .**

**“Except Jehovah build the house, they labor in vain”  
(Ps 127:1).**

**The End Is Only The Beginning**